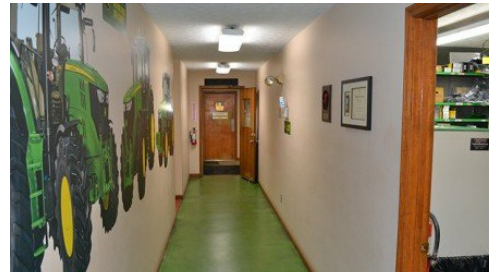


**1111 W 3rd Street Rushville**  
Rushville Township, Indiana 46173



Powered by [agrinewsfarmland.com](http://agrinewsfarmland.com)



**Call For Price**

4.551PrivateSmith FamilynewRH - 13147Commercial Property Currently John Deere Dealership features:  
Showroom, Shop, Warehouse, Truck Dock, Gravel & Hard Surface Parking Lot. Rushville Township, Rush County,  
INSmith FamilyCommercialCommercialRush County 11,556.72N/A LevelN/A13,325 Sq. Ft. Showroom, Offices and  
Shop 7,833 Sq. Ft. Warehouse, Semi Unloading Dock Hard Surface and Gravel Parking Lot Road Frontage on U.S.  
Highway and County Road 100 W1111 W 3rd Street Rushville, IN 46173IN1111 W 3rd Street, Rushville, In. 46173  
located on the west edge of Rushville on U.S. Highway 524.550The property consists of 4 contiguous parcels  
totaling 4.55 acres.Subject to buyer's contingencies Co-brokerage of 2%



**Rusty Harmeyer**

Phone: (765) 570-8118

Halderman Real Estate Services, Inc.

Office: (800) 424-2324

For full listing details, please scan:

